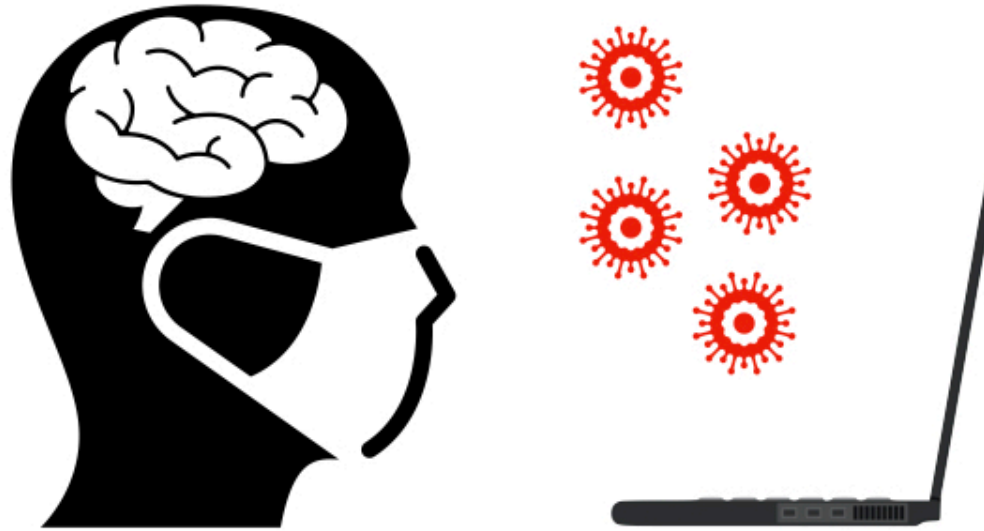


Simulated CBDs for SpRs Project



John Stammers

Consultant T&O St George's Hospital
Hip, knee and revision arthroplasty

15 Feb 2021

Hosted on www.school-of-Andry.com



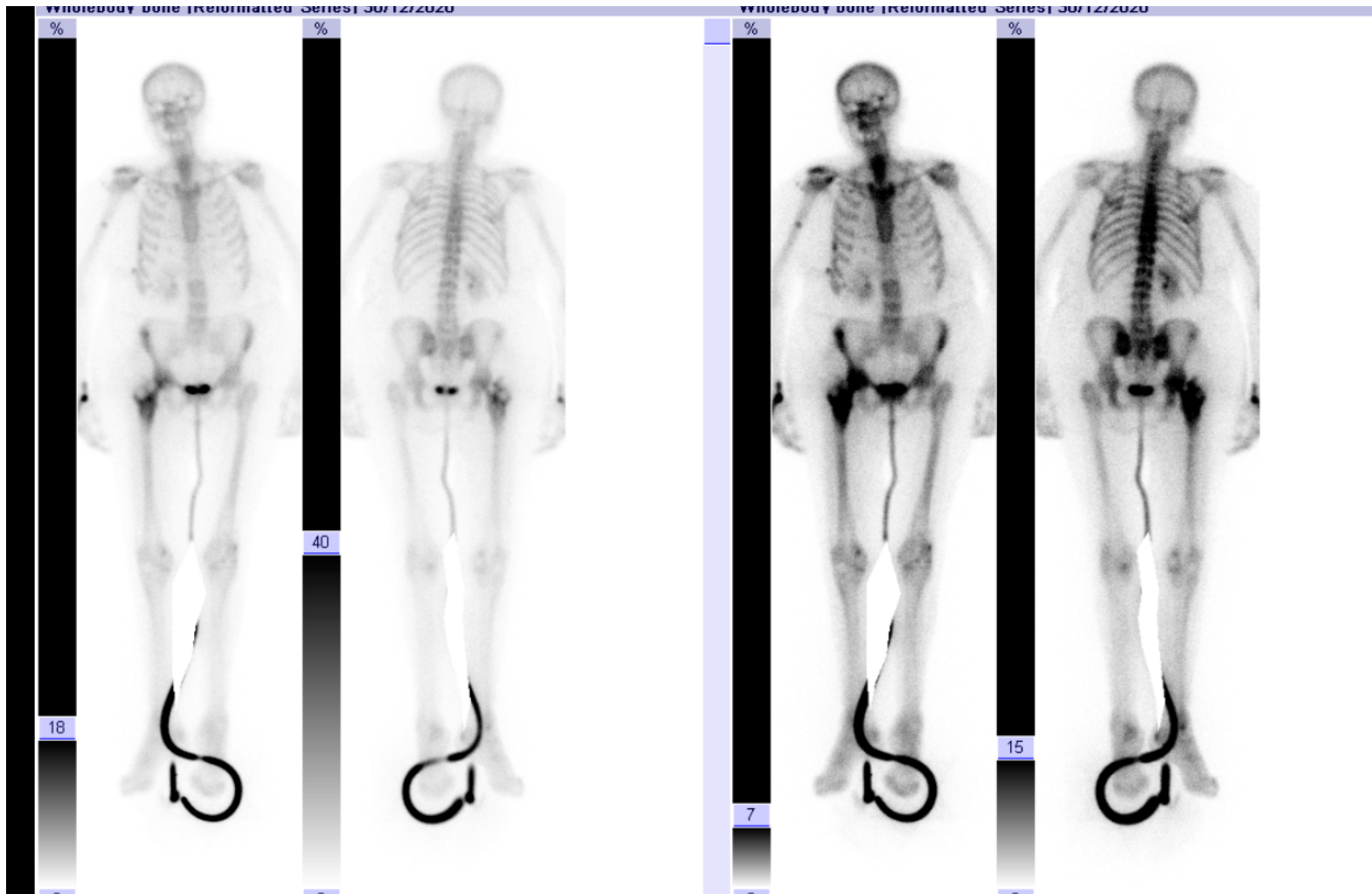
CASE #1



CASE #1



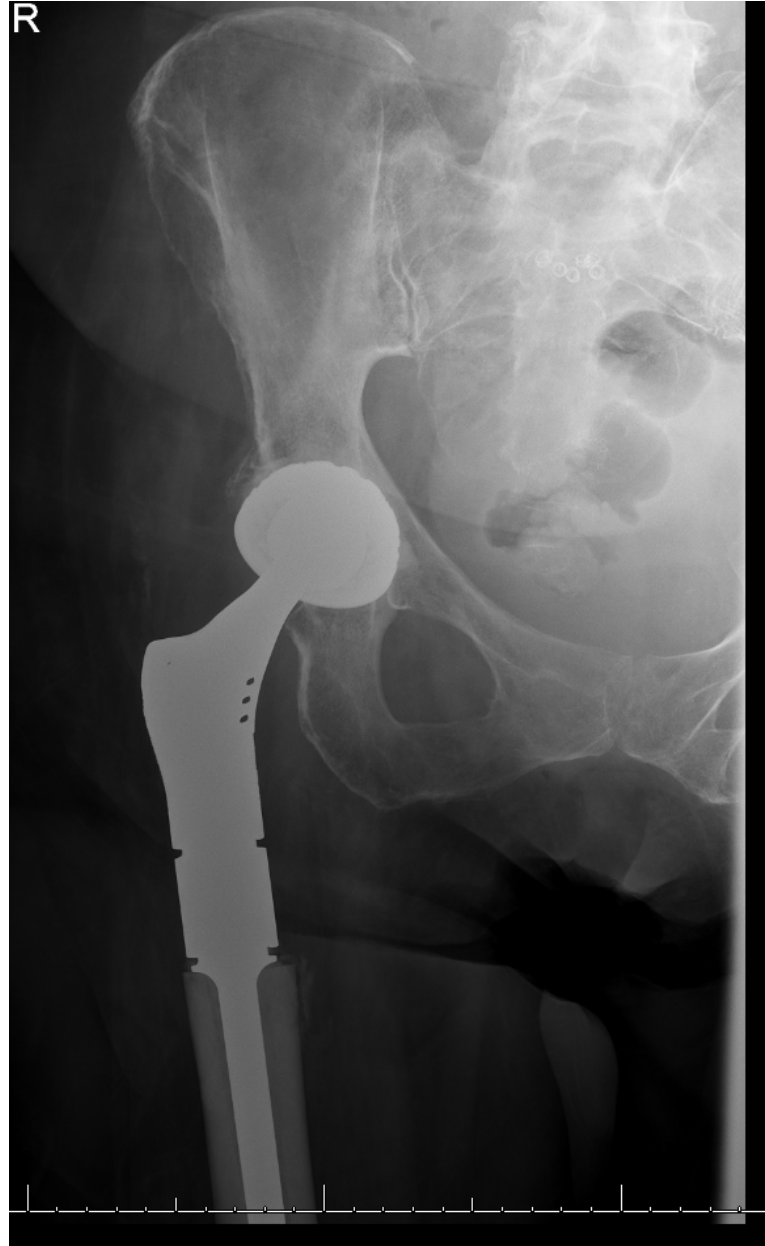
CASE #1



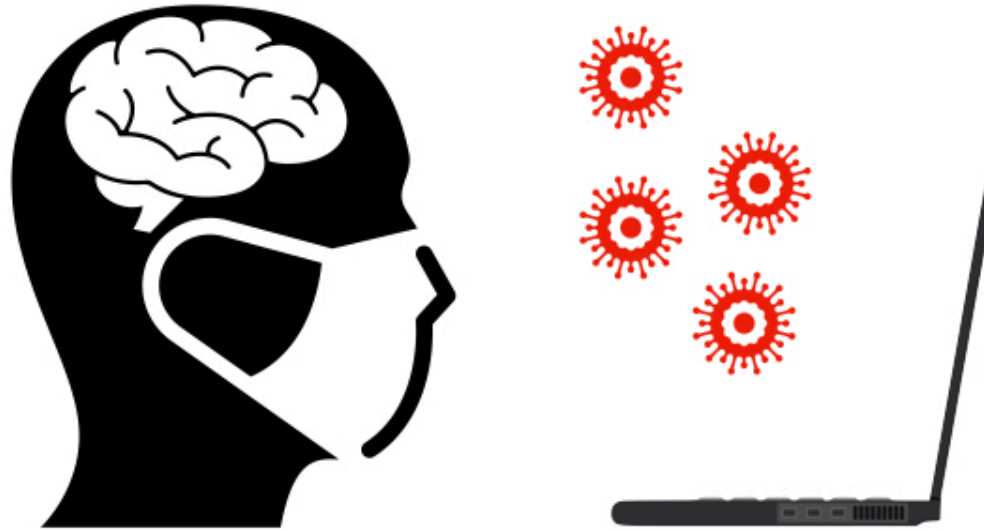
There is a large focus of abnormal tracer uptake at the proximal right femur which corresponds to the destructive, permeative lesion demonstrated on CT of 23 December 2020. This is thought to represent a large bone metastasis as there are further deposits at the right iliac wing and possibly right humerus and thoracic cage.



CASE #1



Simulated CBDs for SpRs Project



**Please submit your CBD
assessments on ISCP now.**

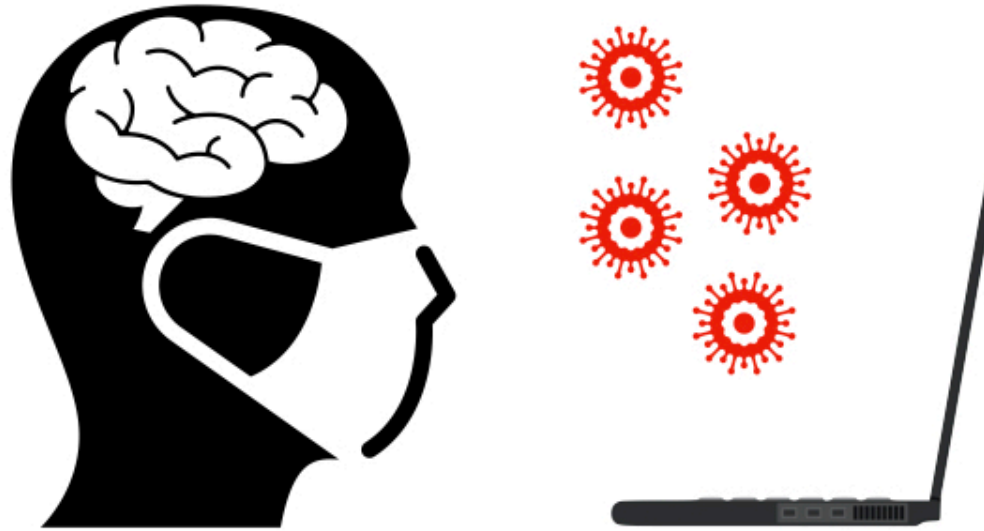
Hosted on www.school-of-Andry.com



CASE #2



Simulated CBDs for SpRs Project



**Please submit your CBD
assessments on ISCP now.**

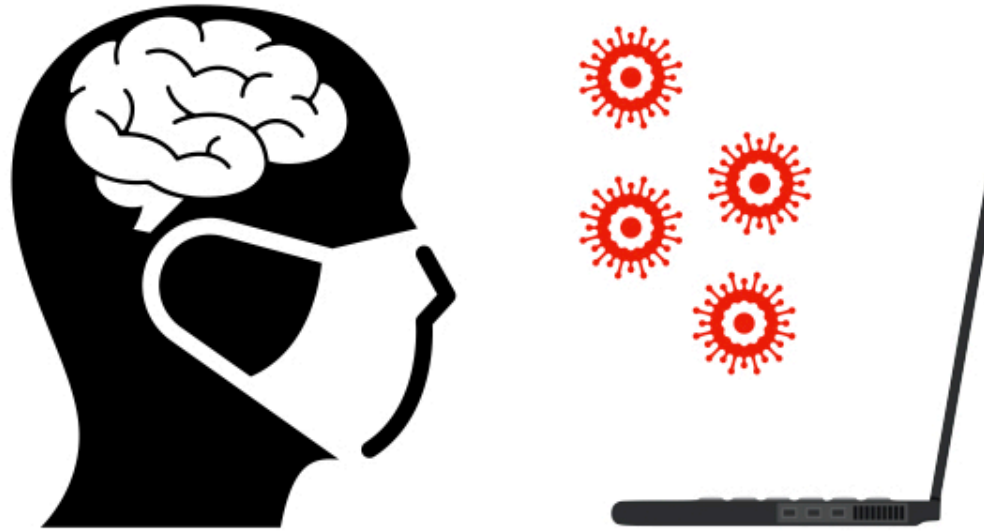
Hosted on www.school-of-Andry.com



CASE #3



Simulated CBDs for SpRs Project



**Please submit your CBD
assessments on ISCP now.**

Hosted on www.school-of-Andry.com

